

SAVIN®

DD 6650P

Digital Duplicator

- Copier
- Printer
- Facsimile
- Scanner



DD 6650P

135 ipm
monochrome
and spot color

Discover the versatility of quality, high-speed output

Be ready for anything — at any time — with the highly productive SAVIN® DD 6650P digital duplicator. This versatile, high-speed device produces up to 135 offset-like quality images per minute with incredible reliability to handle even the most demanding tasks faster, more efficiently and economically. It consumes less energy than comparable conventional high-speed printing systems to make a bigger impact on your workflow and smaller impact on the environment. Choose it as your primary device in a high-volume office or production environment, or use it as part of a strategic Managed Document Services (MDS) initiative to help reduce total cost of ownership throughout your organization.

Seeing is Believing

Take advantage of our proprietary imaging system to produce impressive output with true 600 x 600 resolution. The Savin DD 6650P digital duplicator features evenly distributed, fast-drying ink for crisp, clean edges without offset or bleeding. It regulates ink consumption automatically for exceptional halftones and precise matching with the original image. Its master chemistry also minimizes roller marks and stains, so users in print-for-pay, central reprographic departments, educational and faith-based institutions can create compelling output every time — even while duplex printing.



Designed for Productivity

Engineered to be overworked, but not overpriced, the Savin DD 6650P digital duplicator offers 4,000-sheet master durability and an extended duty cycle of 600,000 prints per month to ensure that you can perform everyday office tasks and extended production runs with speed, convenience and reliability. Packed with power in a compact footprint, it has a robust architecture and few moving parts for maximum uptime. Use it to perform all of your long run, print and copy needs — at sizes up to 11" x 17" — without compromising efficiency or your budget.



Intuitive Operation Panel

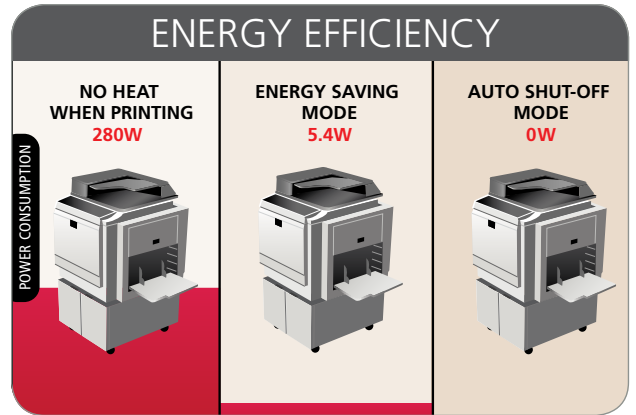
Access advanced print and copy capabilities with a single touch. The Savin DD 6650P digital duplicator offers an easy-to-use touch screen for exceptional control of primary operating functions. The control panel uses large, LED-backlit keys to help walk-up users navigate every print and copy job. It includes intuitive prompts, graphics and other indicators to indicate system status. It even offers one-button control for printing and master-making to expedite tasks and minimize input errors.



Less energy for high-powered performance

Sustain Energy Efficiency

The Savin DD 6650P digital duplicator offers a host of convenient features to reduce energy consumption to less than comparable high-speed printing systems. The copy process doesn't require heat, so it can produce sharp images with excellent contrast while conserving energy. Its energy-saving mode curbs energy consumption even more — up to 88% — compared to standby mode. Plus with automatic shut-off mode, the device turns off when not in use.



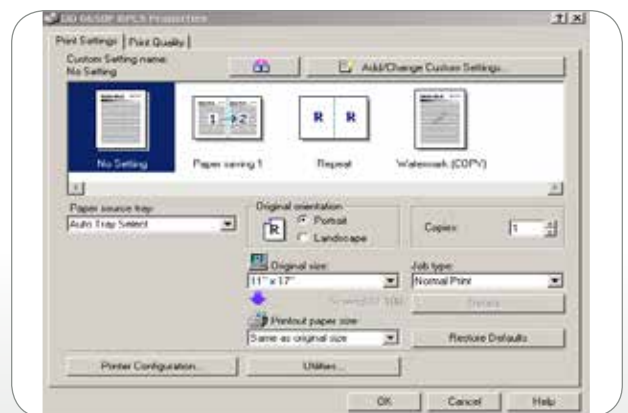
Simplicity Drives Reliability

Every organization thrives on consistency. That's why the Savin DD 6650P digital duplicator is equipped with an innovative paper clamping system for accurate registration. It handles multiple colors and special paper stocks and produces smooth half tones and sharp fine lines — making it ideal for environments requiring superior output. It offers enhanced paper feed technology to minimize misfeeds. In addition, the retry feed mechanism reduces false jams when running various types of paper.



Advanced Network Control

The Savin DD 6650P digital duplicator combines media flexibility with convenient connectivity options to deliver unrelenting performance page after page, month after month. It connects with most standalone computers or networks and even prints directly from a Mac with the optional Adobe® PostScript® 3™. Take advantage of Savin's built in Refined Print Command Stream™ (RPCS) controller and set print settings in moments via icon-based controls. The DD 6650P also integrates with Savin @Remote™, Web Image Monitor and SmartDeviceMonitor utilities for fast, easy desktop administration.



Savin DD 6650P

SYSTEM SPECIFICATIONS

Specifications

Configuration	Desktop
Printing Process	Fully Automatic One Drum Press Cylinder System (Standard Black Drum included)
Power Source	120V, 60Hz
Power Consumption	Master Making/Printing: Up to 280w (135 ppm) Standby: Less than 45.7w Energy Saving Mode (Sleep): 5.4w 2.44 kWh/week
Typical Electricity Consumption (TEC)	1 minute
Default Time to Sleep	22 seconds
Recovery Time from Sleep	
Dimensions (WxDxH)	Set up (with platen): 55.9" x 28.7" x 23.9" (1,420 x 730 x 608 mm) Set up (with ADF): 55.9" x 28.7" x 31.5" (1,420 x 730 x 801 mm) Stored (with platen): 29.5" x 28.7" x 23.9" (750 x 730 x 608 mm) Stored (with ADF): 29.5" x 28.7" x 31.5" (750 x 730 x 801 mm)
Weight (Mainframe)	230 lbs./104.5 kg
Duty Cycle	600,000 prints
PM Interval	1,200,000 prints (or 12 months)
Print	Single color one pass
Color Inks Available	Black, Red, Blue, Brown, Green, Gray, Purple, Yellow, Navy, Maroon, Teal, Orange, Hunter Green, Burgundy, Gold, Reflex Blue, Violet
Print Speed	60 – 135 sheets/min. (6 steps)
Print Resolution	600 x 600 dpi
First-Print Time (A4) (Platen)	18 seconds

Paper Feed Capacity	1,000 sheets (20 lb.)
Paper Delivery Capacity	1,000 sheets (20 lb.)
Paper Size	2.8" x 5.9" to 12.8" x 17.6" (70 x 148 mm to 325 x 447 mm)
Paper Weight	12.5 – 55.6 lbs (47 – 209 g/m ²)
Print Area (max.)	11.4" x 16.6" (more than 290 x 422 mm)
Original Size	Platen: Max. 11.7" x 17.0" (297 x 432 mm) ADF: 5.8" x 8.3" to 11.7" x 17.0" (148 x 210 mm to 297 x 432 mm) Book, Sheet
Original Type	Letter, Photo, Letter/Photo Auto Separation, Tint, Pencil
Image Modes	50, 65, 74, 77, 85, 93, 121, 129, 155, 200%
Reproduction Ratio	50 – 200% (by 1%)
Zoom	H: +/- 10 mm (by 0.25 mm) V: +/- 10 mm (by 0.25 mm)
Image Position (Horizontal/Vertical)	Yes
Interactive Touch-Screen	200 sheets per roll
Masters (A3)	4,000
Master Run Length	200 masters
Master Feed Capacity (A3)	Approx. 100 masters
Eject Master Box (A3)	Standard
Paper Clamper	Standard
Job Separation	Drum Lock, Print Lock, Master Box Lock
Security Mode	Yes (10 programs)
Program Mode	Standard/0W
Energy Saver Mode/ Auto Shut-Off	
Skip Feed	Standard (max. 9 revolutions)
Auto Density Control	Standard
Print Density Control	Standard (4 levels)
Auto Color Drum Detection	Standard

Special Features	User Codes (200); Image Combine (2 in 1, 4 in 1); Repeat Print (2/4/8/16 in 1 and custom); Overlay; Double-feed Detection; Quality Start
-------------------------	--

Controller (Standard)

CPU	300 MHz
RAM	128 MB
Page Description Language	Standard: RPCS, PJI Optional: Adobe PostScript 3, Adobe PDF
Host Interfaces	USB 1.1/2.0, Ethernet 10BASE-T/100BASE-TX, IEEE802.3u
Network Protocol	TCP/IP, NetBEUI
Network Operating System	Windows XP/Server2003/Vista/Server2008/7/Server2008R2 (32/64 bit); Mac OSX v10.4 – 10.8

Accessories

Cabinet DD66	
Dimensions (WxDxH)	24.1" x 24.8" x 17.6" (613 x 630 x 448 mm)
Weight	44 lbs./20 kg

Additional Accessories

ADF DF7000	
Drum Type 90 11" x 17"/A3	
Drum Type 90 8.5" x 11"/A4	
Platen Cover Type 3352	
PostScript 3 Board Type 2	

www.savin.com

Ricoh Americas Corporation, 70 Valley Stream Parkway, Malvern, PA 19355, 1-877-472-8460
Savin® and the Savin logo are registered trademarks of Ricoh Americas Corporation. Ricoh® and the Ricoh Logo are registered trademarks of Ricoh Company Ltd. All other trademarks are the property of their respective owners. ©2013 Ricoh Americas Corporation. All rights reserved. Savin products and services are offered by Ricoh Americas Corporation and its affiliates. The content of this document, and the appearance, features and specifications of Savin products and services are subject to change from time to time without notice. Products are shown with optional features. While care has been taken to ensure the accuracy of this information, Ricoh makes no representation or warranties about the accuracy, completeness or adequacy of the information contained herein, and shall not be liable for any errors or omissions in these materials. Actual results will vary depending upon use of the products and services, and the conditions and factors affecting performance. The only warranties for Savin products and services are as set forth in the express warranty statements accompanying them.

53435

